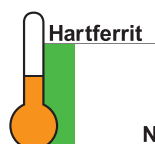
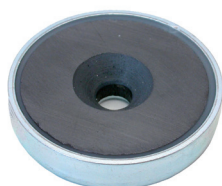
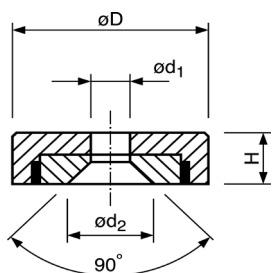




**Flachgreifer, Hartferrit, Stahlgehäuse, Bohrung und Senkung**  
**Flat pot magnet, hard ferrite, steel body, bore and counter bore**

■ ■ ■ Hergestellt in Deutschland / manufactured in Germany



Art.-Nr.	D (mm)	H (mm)	d1 (mm)	d2 (mm)	Haftkraft (N) Power (N)	Gewicht (g) Weight (g)	Temp. (°C) Temp. (°C)
FH016aH	16 ±0,1	4,5 +0,2/-0,1	3,5 ±0,2	6,5 +1,5/-0	14	4	200
FH020aH	20 ±0,1	6 +0,2/-0,1	4,1 +0,4/-0	9,4 +1/-0	27	9	200
FH025aH	25 ±0,1	7 +0,3/-0,2	5,5 ±0,2	11,5 +1/-0	36	17	200
FH032aH	32 ±0,1	7 +0,3/-0,2	5,5 +0,25/-0,25	11,5 +1/-0	72	27	200
FH040aH	40 +0,2/-0,1	8 +0,4/-0,2	5,5 ±0,2	12,5 +1/-0	90	52	200