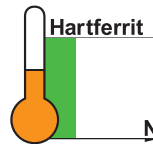
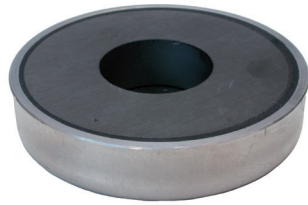
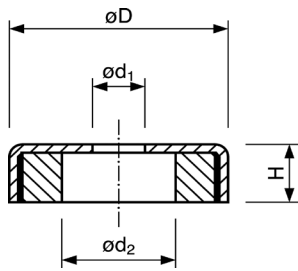




Flachgreifer, Hartferrit, Edelstahlgehäuse, Zylinderbohrung
Flat pot magnet, hard ferrite, stainless steel body, cylinder bore

■ ■ ■ Hergestellt in Deutschland / manufactured in Germany



Art.-Nr.	D (mm)	H (mm)	d1 (mm)	d2 (mm)	Haftkraft (N) Power (N)	Gewicht (g) Weight (g)	Temp. (°C) Temp. (°C)
FH050ki	50 +0,2/-0,1	10 +0,5/-0,2	8,5 ±0,2	22	145	85	220
FH063ki	63 +0,3/-0,1	14 +0,5/-0,2	6,5 ±0,2	24	230	195	220